

## PRECAUTIONS

- Amplifier produces high volume levels. Staying in places of high volume levels could cause permanent hearing loss.
- Do not use the amplifier in humid and dusty places.
- Do not operate the amplifier through the unearthed socket.
- Do not leave the amplifier in the vicinity of children.
- Do not use the amplifier with broken power outlet or improper power cord.
- Do not install nor use the amplifier near any heat sources, in case of overheating the amplifier turns off and will return to work after cooling the unit. Do not cover the vent holes!
- In order to ensure proper air circulation, do not block any of the ventilation openings.
- Never put any liquid containers near the amplifier.
- In case of any objects or liquid access inside the amplifier, urgently switch the apparatus off and unplug the power supply cord.
- Protect the amplifier from any strikes.
- ATTENTION: To reduce the risk of electrical shock, do not remove the back cover of the amplifier. Inside parts can be repaired only by qualified service personnel.
- WARNING: To prevent the risk of electrical shock do not expose this appliance to moisture, rain or any liquid.



**Disposal of old Electrical & Electronic Equipment (Applicable throughout the European Union and other European countries with separate collection programs)**

This symbol, found on your product or on its packaging, indicates that this product should not be treated as household waste when you wish to dispose of it. Instead, it should be handed over to an applicable collection point for the recycling of electrical and electronic equipment. By ensuring this product is disposed of correctly, you will help prevent potential negative consequences to the environment and human health, which could otherwise be caused by inappropriate disposal of this product. The recycling of materials will help to conserve natural resources. For more detailed information about the recycling of this product, please contact your local city office, household waste disposal service or the retail store where you purchased this product.



RoHS

Box Electronics ul. Cieszyńskiego 4, 81-881 Sopot, Poland  
e-mail [info@taurus-amp.pl](mailto:info@taurus-amp.pl) / [www.taurus-amp.pl](http://www.taurus-amp.pl)



## GUITAR AMPLIFIER OWNER'S MANUAL

# Stomp-Head<sup>3</sup>



# HIGH GAIN

## DESIGNED BY MUSICIANS FOR MUSICIANS



**The Stomp-Head 3** is an ultra light, very compact floor amplifier with integrated foot-switch, designed to be set on the pedal board, along with effects or, placed directly on the stage floor. It greatly benefits the player with immediate access to all amps potentiometers and options. When the amp is set on the pedal board only one wire (speaker wire) is needed to setup the guitar sound on stage. This amplifier can also be placed on a top of a cabinet like a regular head. You can control the amp modes with an external controller or simple footswitch thanks to external controller socket.

The Stomp-Head 3 is based on a **MTD (Master Tube Design)** technology. It is our own groundbreaking technology which allowed us to create powerfull guitar amplifiers in very compact shape. This technology uses all the significant features of tubes which determine the classic sound of guitar amps. We offer players a fully analog amplifier with extremely light weight, very compact dimensions and powerful sound. The sound characteristics and power of our MASTER TUBE based amplifiers are equal to the classic tube amps with the same power rating.

Guitarist has an access to two channels: CLEAN and LEAD, while CLEAN channel gives two different sounds: CLEAN or slightly distorted CRUNCH type. CRUNCH can be smoothly adjusted by a potentiometer GAIN. Additional using the footswitches you can activate BOOST and MUTE features.

Unit is equipped with power selector that allows to set 60Watt/25Watt in STAGE MODE and 15Watt/7Watt in STUDIO MODE and it is designed to work with 4, 8, and 16 ohm cabinets (Power Amp will auto-adjust to speakers impedance) Stomp-Head can be used also as a guitar preamp without connecting speaker cabinet.

LINE OUT with a speaker cabinet simulation allows the connection of the amplifier to a mixer or an external power amp. LINE OUT signal simulates the sound of the 4x12 CELESTION Vintage 30 cabinet. Device is also equipped with a serial effect loop.

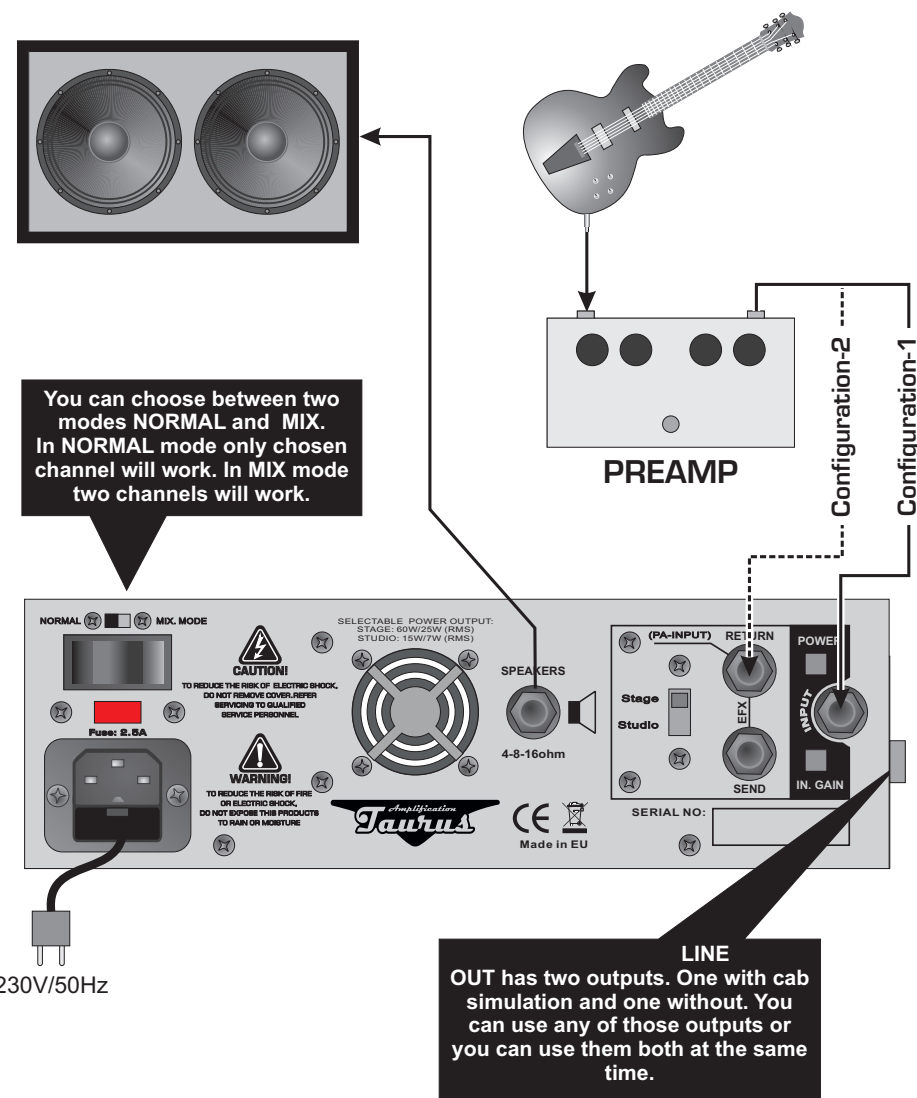
## SPECIFICATIONS

- Power output:
  - 60W or 25W / 4ohm, 8ohm, 16ohm in STAGE MODE
  - 15W or 7W / 4ohm, 8ohm, 16ohm in STUDIO MODE
- 2 channels: CLEAN and LEAD
- 3 footswitches: CHANNEL-CLEAN/LEAD, BOOST, MUTE
- CHANNELS controls:
  - CLEAN i LEAD: GAIN, BASS, MIDDLE, MID-RANGE switch, TREBLE, PRESENCE, VOLUME + common BOOST
- Input GAIN [switch +6dB]
- BOOST: fast access to two different volume levels
- Serial effect loop
- LINE OUTPUT with speaker simulation
  - The ability to send the linear signal with or without simulation or both at the same time
- INPUT for external channel selector/controller
- PHONES OUTPUT
- AUX-INPUT allows to connect an audio player or to send signal to the headphones.
- MIX-MODE both of the amps channels can be mixed and used simultaneously
- Power Output selector STAGE / STUDIO
- Dimensions: [H x W x D] 90 x 270 x 205 mm wek z pominięciem wzmacniacza.
- Weight: 2.2kg

## EXTERNAL DEVICES CONNECTION

External devices such as a preamp or a guitar DSP can be connected to the Stomp Head. Both devices may be set-up by two different method.

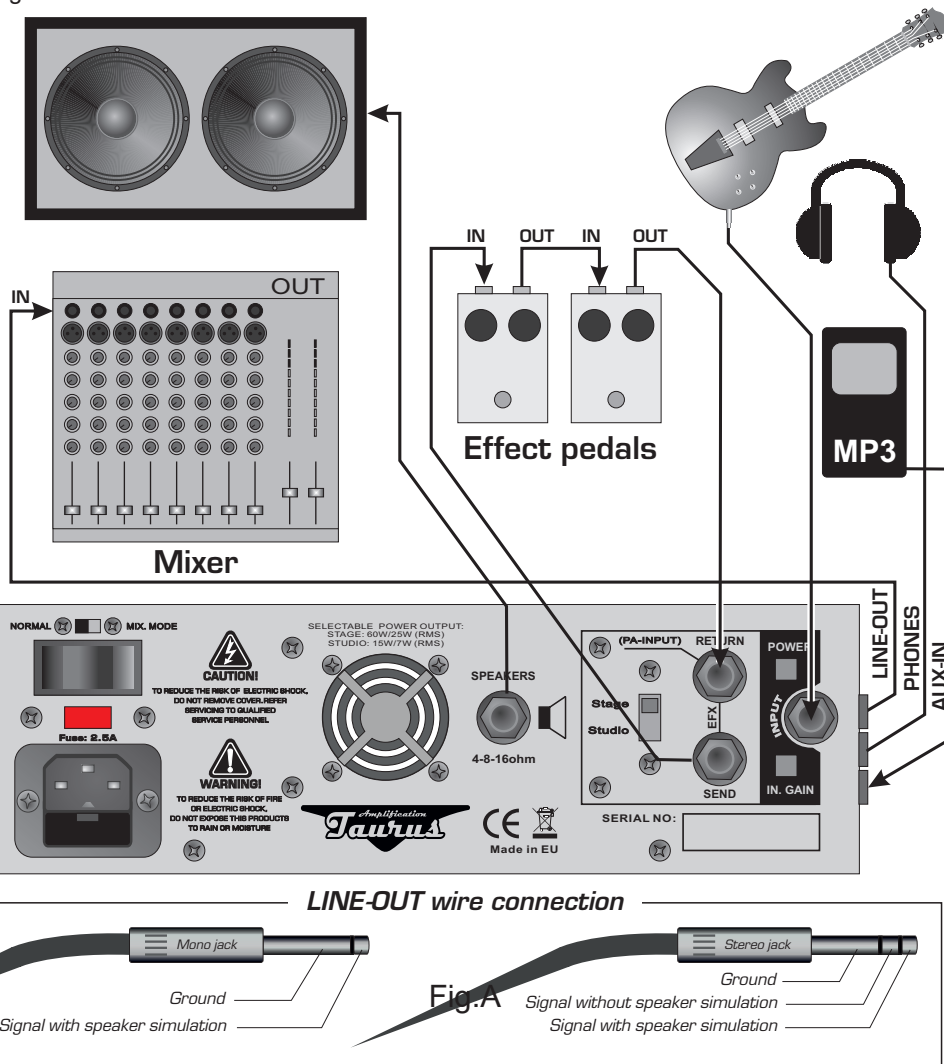
1. To the amp input – in this configuration all potentiometers and foot-switches will be active.
2. Directly to the power amp, by-passing the pre-amp. In this configuration, the OUTPUT of DSP or external PRE-AMP must be connected to the effect loop RETURN. Consequently, the Stomp- Head's pre-amp stays disconnected and only the BOOST foot-switch remains active. This set-up is recommended when only the Stomp Head's power amp is needed.



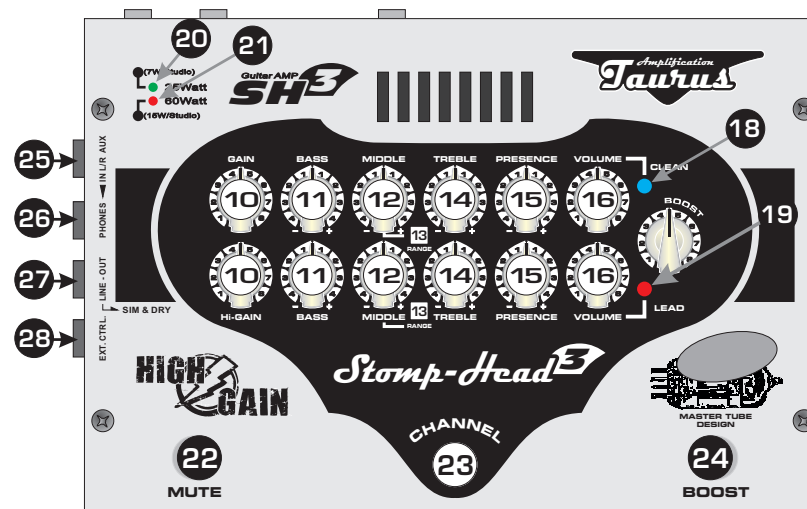
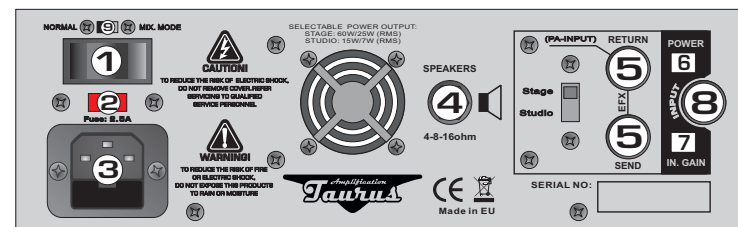
## EFFECT AND MIXER CONNECTION

The external effects may be connected between both preamps (CLEAN and LEAD) and the MASTER section through the parallel EFFECT LOOP. This type of connection is recommended when the Volume pedal or Delay, Reverb, Flanger type of effects are used. When the mixer or the external amplifier is connected, the LINE-OUTPUT with integrated cabinet simulator must be used. Such would simulate the sound of a 412 Celestion Vintage 30 Cabinet. The cabinet simulator enhances the sound that is sent to the stage monitors as though it were coming from a stage cabinet. Signal from Line-out can be lead in different ways: with simulation, without simulation or both see Fig.A.

The amplifier is also equipped with headphone output and an AUX input for connecting an audio player. The signal from the AUX input is only supplied to the headphones bypassing the poweramp. This allows you to play with a backing track or record and monitor your signal.



## FRONT & REAR PANEL



- [1] - POWER on/off switch
- [2] - Voltage selector 230V/120V
- [3] - AC POWER input
- [4] - Speakers output / impedance: 4-8-16ohm [auto detect. impedance]
- [5] - EFFECT LOOP connectors [SEND and RETURN]
- [6] - Power selector 60Watt/25Watt
- [7] - INPUT GAIN boost +6dB
- [8] - INPUT
- [9] - NORMAL / MIX-MODE selector
- [10] - GAIN control
- [11] - BASS control
- [12] - MIDDLE control
- [13] - MID-RANGE switch - changes range of MIDDLE control parameters.
- [14] - TREBLE control
- [15] - PRESENCE control
- [16] - VOLUME control
- [17] - BOOST control
- [18] - LED indicator / CLEAN- channel ON
- [19] - LED indicator / LEAD-channel ON
- [20] - Power output LED indicator / 25W in STAGE mode or 7W in STUDIO mode
- [21] - Power output LED indicator / 60W in STAGE mode or 15W in STUDIO mode
- [22] - MUTE footswitch
- [23] - Fotswitches for channel selection
- [24] - BOOST footswitch
- [25] - AUX INPUT to connect external audio signal in to headphones amp.
- [26] - Headphones output
- [27] - LINE OUTPUT with two signals: with speaker cabinet simulation and dry, without simulation.
- [28] - Output for external controller

## TONE CONTROLS

Each channel is equipped with a regular 4-point equalizer: BASS, MIDDLE, TREBLE and PRESENCE. The MID-RANGE switch changes the range of frequency of the MIDDLE potentiometer. This option is very useful in the proper setting of the guitar's sound in an overall band mix depending on the style of music played and type of guitar used. Additionally, the highest frequency range of the guitar can be altered by the BRIGHT/DARK switch.

## BOOST MODE

The BOOST MODE allows for instant increase of volume level during a performance. The potentiometer [17] and a foot-switch [24] are designed to control the BOOST MODE. The BOOST function performs two features at the same time: it boosts a signal at the input of the preamp, giving extra compression and raising the volume. Desired volume level may be adjusted by tweaking the potentiometer. By then pressing the BOOST switch located on the top of the amp, two different volume levels previously set will be obtained. The BOOST MODE is quite beneficial as it heightens the guitar solo during a live performances.

## NORMAL / MIX-MODE

The amplifier is designed to operate in two modes:

**NORMAL** where only one of the two channels is used and in the **MIX-MODE** where both channels are mixed and used simultaneously. The MIX-MODE option has been designed for musicians who love to experiment with sound which is the result of blending several channels simultaneously. In this mode, all controllers in every channel are operational and allow the player to freely mix signals from all channels simultaneously to obtain a desired texture of sound.

## POWER BRAKE

The amplifier has two power selector switches: the main power selector and the STAGE-STUDIO mode selector. There are following power options available:

60W or 25W in STAGE mode  
15W or 7W in STUDIO mode

You can connect 4-8-16Ohm speakers to this amplifier. The amplifier automatically adjusts the operating parameters to the connected column. The amplifier can also be used without a loudspeaker. If no cable is connected to the speaker output, then the power amplifier is automatically locked.

## TUBES

Optimal operating parameters of tubes 12AX7 were set by manufacturer. It is not recommended to replace operational tubes. Only broken tubes should be replaced with new ones.

## ADDITIONAL EXTERNAL CONNECTION

1. The graph below shows how the external foot-switch should be connected in order to control amplifier functionalities. If the external foot switch is connected, therefor, the internal amp foot-switches become disconnected. Note: external controller should be implemented with bistable switches type OFF- [ON].
2. The audio player can be connected using a stereo or mono-jack cable. The signal of audio player will be heard in the headphones only, not in the speaker.

