

## PRECAUTIONS

- Amplifier produces high volume levels. Staying in places of high volume levels could cause permanent hearing loss.
- Do not use the amplifier in humid and dusty places.
- Do not operate the amplifier through the unearthed socket.
- Do not leave the amplifier in the vicinity of children.
- Do not use the amplifier with broken power outlet or improper power cord.
- Do not install nor use the amplifier near any heat sources, in case of overheating the amplifier turns off and will return to work after cooling the unit. Do not cover the vent holes!
- In order to ensure proper air circulation, do not block any of the ventilation openings.
- Never put any liquid containers near the amplifier.
- In case of any objects or liquid access inside the amplifier, urgently switch the apparatus off and unplug the power supply cord.
- Protect the amplifier from any strikes.
- ATTENTION: To reduce the risk of electrical shock, do not remove the back cover of the amplifier. Inside parts can be repaired only by qualified service personnel.
- WARNING: To prevent the risk of electrical shock do not expose this appliance to moisture, rain or any liquid.

# Taurus

Box Electronics  
ul Cieszyńskiego 4,  
81-881 Sopot  
Poland  
tel +48 58 550 66 46  
tel/fax +48 58 551 90 05  
e-mail [info@taurus-amp.pl](mailto:info@taurus-amp.pl)  
[www.taurus-amp.pl](http://www.taurus-amp.pl)



RoHS



### Disposal of old Electrical & Electronic Equipment (Applicable throughout the European Union and other European countries with separate collection programs)

This symbol, found on your product or on its packaging, indicates that this product should not be treated as household waste when you wish to dispose of it. Instead, it should be handed over to an applicable collection point for the recycling of electrical and electronic equipment. By ensuring this product is disposed of correctly, you will help prevent potential negative consequences to the environment and human health, which could otherwise be caused by inappropriate disposal of this product. The recycling of materials will help to conserve natural resources. For more detailed information about the recycling of this product, please contact your local city office, household waste disposal service or the retail store where you purchased this product.

Amplification  
**Taurus**

GUITAR AMPLIFIERS  
MANUAL

*Stomp-Head 5*



**DESIGNED BY MUSICIANS FOR MUSICIANS**

**The Stomp-Head 5** is an ultra light, very compact floor amplifier with integrated foot-switch, designed to be set on the pedal board, along with effects or, placed directly on the stage floor. It greatly benefits the player with immediate access to all amps potentiometers and options. When the amp is set on the pedal board only one wire (speaker wire) is needed to setup the guitar sound on stage. This amplifier can also be placed on a top of a cabinet like a regular head. You can control the amp modes with an external controller or simple footswitch thanks to external controller socket.

**The Stomp-Head 5** is based on a **MTD (Master Tube Design)** technology. It is our own groundbreaking technology which allowed us to create powerfull guitar amplifiers in very compact shape. This technology uses all the significant features of tubes which determine the classic sound of guitar amps. We offer players a fully analog amplifier with extremely light weight, very compact dimensions and powerful sound. The sound characteristics and power of our MASTER TUBE based amplifiers are equal to the classic tube amps with the same power rating. The Stomp-Head 5 features three channels: **CLEAN, CLASSIC LEAD** and **HIGH GAIN LEAD**, which are accessible by footswitches built into the amp's chassis or by an external controller.

Each channel represents different sound characteristics which give a great freedom in obtaining a desired sound's texture of the instrument. The amp is designed to produce a wide array of different sounds. From a classic, clean jazzy sound throughout modern **DRIVE**, up to heavy saturated **HIGH GAIN** like distortion.

Other than a regular three point EQ (**BASS, MIDDLE, TREBLE**) each channel is equipped with **MID/RANGE** switches which are designed to change the range of the **MIDDLE** frequencies. This option is very useful in proper setting of the guitar's sound in a bands overall mix depending on the style of music played and type of guitar used. Additionally the highest frequency range of the guitar can be altered by the **BRIGHT/DARK** switch.

Unit is equipped with power selector that allows to set **90Watt** or **4Watt** and it is designed to work with **4, 8, and 16 ohm** cabinets (Power Amp will auto-adjust to speakers impedance)

Stomp-Head can be used also as a guitar preamp without connecting speaker cabinet.

**LINE OUT** with a speaker cabinet simulation allows the connection of the amplifier to a mixer or an external power amp. **LINE OUT** signal simulates the sound of the **CELESTION Vintage 30** cabinet. Device is also equipped with a serial effect loop.

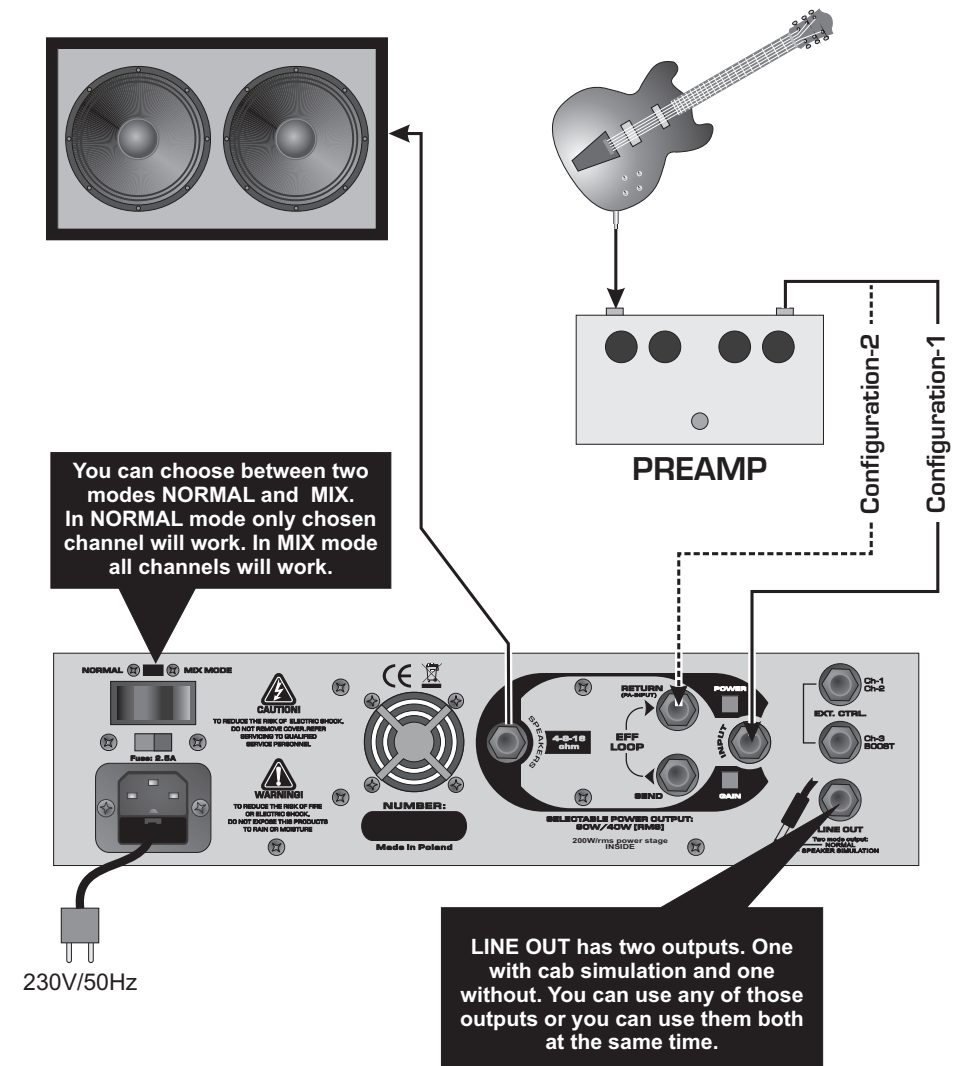
## SPECIFICATIONS

- Power output - 90 Watt / 4ohm, 8ohm, 16ohm
- Power brake to 40Watt
- Auto detection speakers impedance
- Tubes: 12AX7
- 3 channels: CLEAN, Classic LEAD, High Gain LEAD
- 5 footswitches: CHANNEL 1-2-3, BOOST, MUTE
- 1-CLEAN channel controls: BASS, MIDDLE, TREBLE, GAIN, VOLUME / switches: MID-RANGE, BRIGHT
- 2-Classic LEAD channel controls: DRIVE, BASS, MIDDLE, TREBLE, VOLUME / switches: MID-RANGE, BRIGHT-DARK
- 3-High Gain LEAD channel controls: DRIVE, BASS, MIDDLE, TREBLE, VOLUME / switches: MID-RANGE, BRIGHT-DARK
- Master controls: NOISE GATE, BOOST, MASTER
- Input: GAIN (switch +6dB)
- BOOST: fast access to two different volume levels
- Serial effect loop
- LINE OUTPUT with speaker simulation
- It's possible to use LINE OUTPUT with or without cab simulation or both at the same time
- Additional input for external channel selector / controller
- Dimensions: [H x W x D] 90 x 330 x 205 mm
- Weight: 2,65kg

## EXTERNAL DEVICES CONNECTION

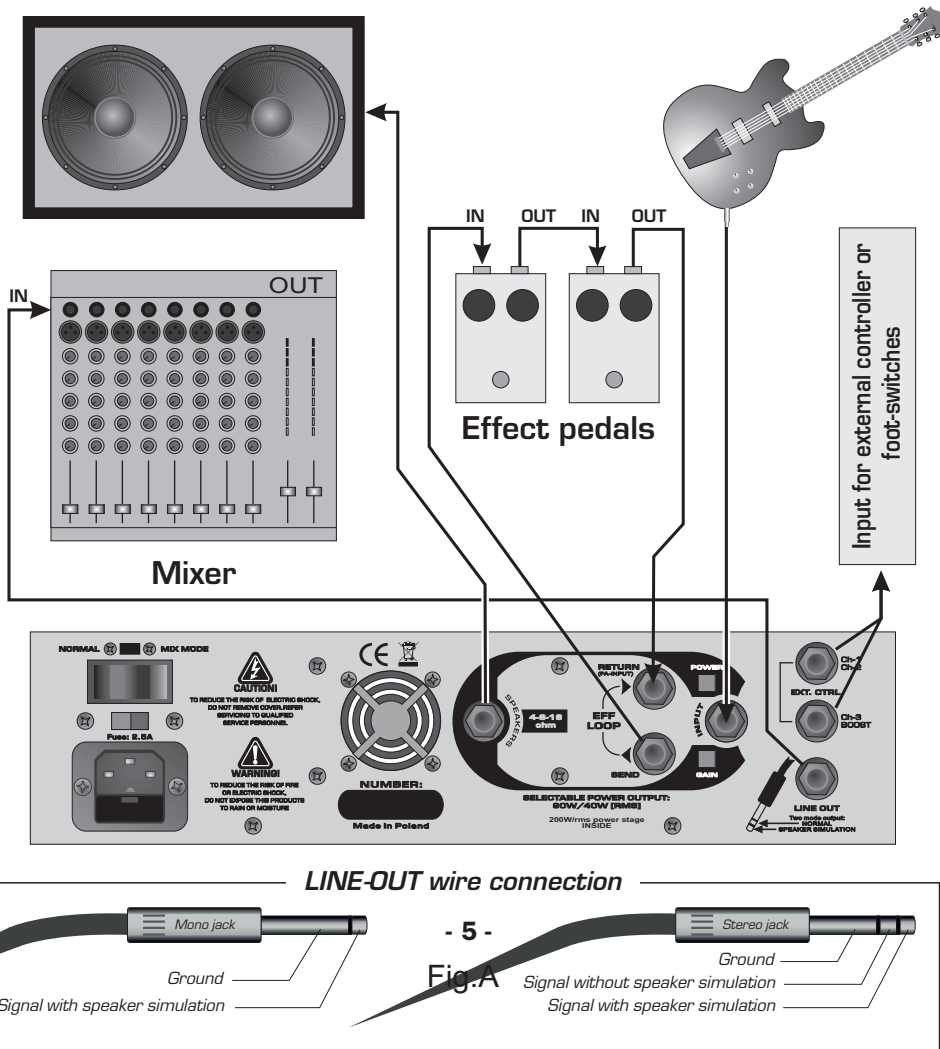
External devices such as a preamp or a guitar DSP can be connected to the Stomp Head. Both devices may be set-up by two different method.

1. To the amp input – in this configuration all potentiometers and foot-switches will be active.
2. Directly to the power amp, by-passing the pre-amp. In this configuration, the OUTPUT of DSP or external PRE-AMP must be connected to the effect loop RETURN. Consequently, the Stomp-Head's pre-amp stays disconnected and only the BOOST foot-switch remains active. This set-up is recommended when only the Stomp Head's power amp is needed.

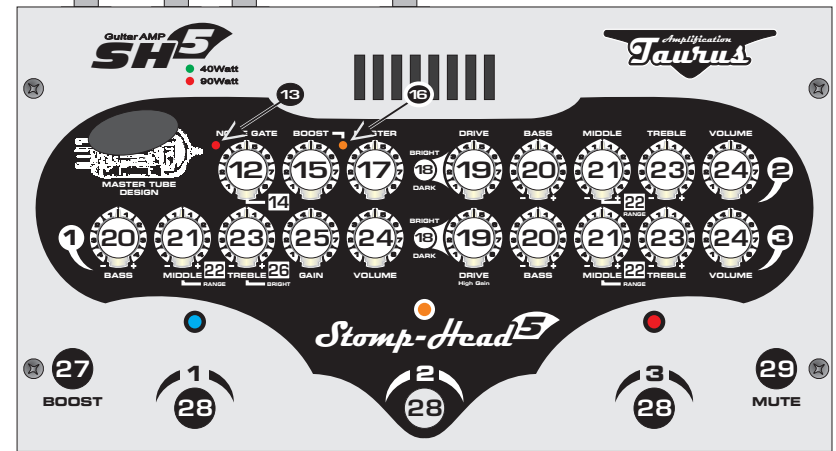
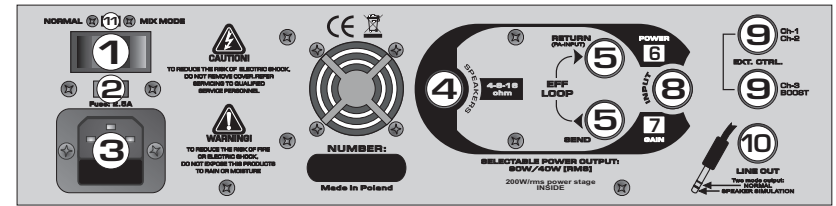


# EFFECT AND MIXER CONNECTION

The external effects may be connected between both preamps (CLEAN and LEAD) and the MASTER section through the parallel EFFECT LOOP. This type of connection is recommended when the Volume pedal or Delay, Reverb, Flanger type of effects are used. **IMPORTANT:** The volume potentiometers in channels 1-2-3 determinate the amount of gain sent to the effects. If too much signal is sent to the effect, unwilling distortion can occur. In which case the Volume potentiometers should be gradually lowered. Subsequently, the sound level should be equalized by increasing the volume by MASTER potentiometer. When the mixer or the external amplifier is connected, the LINE-OUTPUT with integrated cabinet simulator must be used. Such would simulate the sound of a 412 Celestion Vintage 30 Cabinet. The cabinet simulator enhances the sound that is sent to the stage monitors as though it were coming from a stage cabinet. Signal from Line-out can be lead in different ways: with simulation, without simulation or both see Fig. A.



# FRONT & REAR PANEL



- [1] - POWER on/off switch
- [2] - Voltage selector 230V/120V
- [3] - AC POWER input
- [4] - Speakers output / impedance: 4-8-16ohm [auto detect. impedance]
- [5] - EFFECT LOOP connectors [SEND and RETURN]
- [6] - Power selector 90Watt/40Watt
- [7] - INPUT GAIN boost +6dB
- [8] - INPUT
- [9] - Output for external controller
- [10] - LINE OUTPUT with speaker cabinet simulation
- [11] - NORMAL / MIX-MODE selector
- [12] - NOISE GATE control
- [13] - NOISE GATE LED indicator
- [14] - NOISE GATE ON/OFF switch
- [15] - BOOST control
- [16] - BOOST LED indicator
- [17] - MASTER level control
- [18] - 3-mode switch for high-frequency tone shape: BRIGHT-NORMAL-DARK
- [19] - DRIVE control
- [20] - BASS control
- [21] - MIDDLE control
- [22] - MID-RANGE switch - changes range of MIDDLE control parameters.
- [23] - TREBLE control
- [24] - VOLUME control
- [25] - GAIN control for channel-1
- [26] - BRIGHT tone switch for channel-1
- [27] - BOOST footswitch
- [28] - Footswitches for channel selection
- [29] - MUTE footswitch

## STONE CONTROLS

Each channel is equipped with a regular three point EQ (BASS, MIDDLE, TREBLE) and switches which change the character of the sound.

The MID-RANGE switch changes the range of frequency of the MIDDLE potentiometer. This option is very useful in the proper setting of the guitar's sound in an overall band mix depending on the style of music played and type of guitar used. Additionally, the highest frequency range of the guitar can be altered by the BRIGHT /DARK switch.

## NOISE GATE

The NOISE GATE is designed to eliminate noise and interference superimposed on the signal from the instrument. The signal is cut off at the moments when breaks in playing are occurring. The NOISE GATE can be turned ON or OFF by the switch "14" and the level of threshold is adjustable by the potentiometer "12". The Noise Gate's threshold is indicated by the LED "13"

## BOOST MODE

The BOOST MODE allows for instant increase of volume level during a performance. The potentiometer [15] and a foot-switch [27] are designed to control the BOOST MODE. Upon turning ON and pressing the foot-switch, the LED [16] indicates that the BOOST mode is activated. Thereafter, the desired volume level may be adjusted by tweaking the potentiometer. By then pressing the BOOST switch located on the top of the amp, two different volume levels previously set will be obtained. The BOOST MODE is

## MUTE

The MUTE function allows quick muting of the instrument using a footswitch. After pressing the switch all LED's assigned to the chosen channel are turn OFF. The signal from the guitar is MUTED at the speaker out and at all preamp outputs. Reactivating the amplifier is done by pressing any footswitch channel selector.

## NORMAL / MIX-MODE

The amplifier is designed to operate in two modes:

**NORMAL** where only one of the three channels is used and in the **MIX-MODE** where all three channels are mixed and used simultaneously.

Note: In the MIX-MODE all channel's selecting foot switches are disabled.

The MIX-MODE option has been designed for musicians who love to experiment with sound which is the result of blending several channels simultaneously. In this mode, all controllers in every channel are operational and allow the player to freely mix signals from all channels simultaneously to obtain a desired texture of sound.

## TUBES

Optimal operating parameters of tubes 12AX7 were set by manufacturer. It is not recommended to replace operational tubes. Only broken tubes should be replaced with new ones.

## EXTERNAL FOOT SWITCH CONNECTION

The graph below shows how the external foot-switch should be connected in order to control amplifier functionalities. If the external foot switch is connected, therefore, internal amp foot-switches become disconnected. Note: external controller should be implemented with momentary switches type OFF- [ON].

